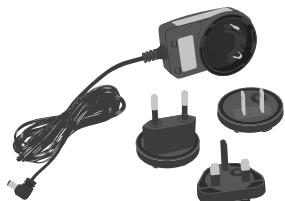


## Required parts



Sound Control Unit (SCU)



Power supply adapter



Optical connection cable (S/PDIF)



Remove the protective caps!



PS4™ chat cable

## PS4™ output sound settings

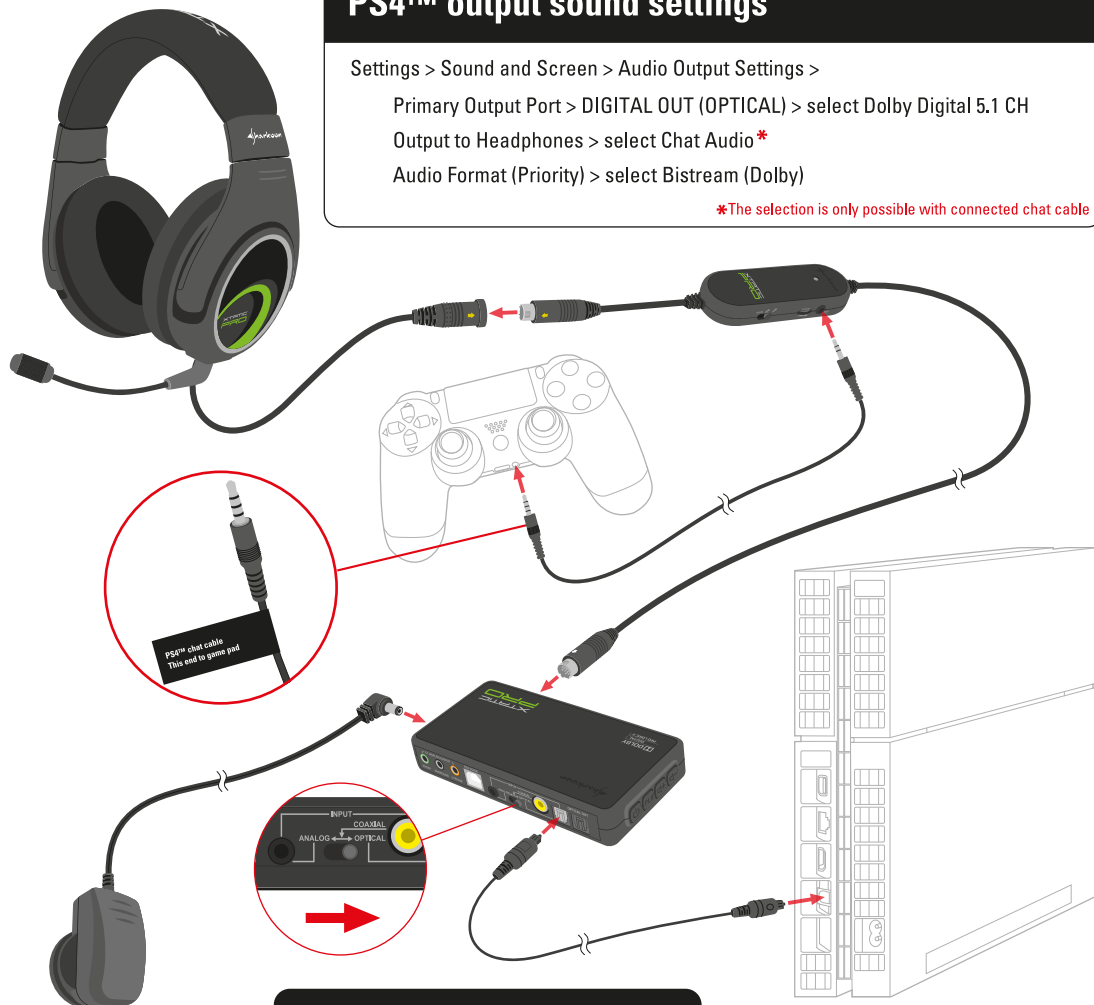
Settings > Sound and Screen > Audio Output Settings >

Primary Output Port > DIGITAL OUT (OPTICAL) > select Dolby Digital 5.1 CH

Output to Headphones > select Chat Audio\*

Audio Format (Priority) > select Bistream (Dolby)

\*The selection is only possible with connected chat cable



X-Tatic PRO cabling with PS4™